



Burnwire

REL-238



Burnwires are devices used in seawater to release an anchor weight, close a Niskin bottle or baited trap, release a float or drop arm, or close a valve.

The Global Ocean Design Burnwire (REL-238) holds up to 250-lbs (static) until a 10-24V DC voltage is applied. Using seawater as a conductor, the burnwire galvanically corrodes, releasing in 6-15 minutes depending largely on environmental conditions, mainly temperature.

The Burnwire incorporates jacketed stainless steel wire rope, a 316 SS shackle, and a SubCon ILM1M pigtail with locking sleeve. Compatible with the Global Ocean Design Burnwire Mount (sold separately).

Key Features:

- Rated for 250-lbs (static)
- Side-load and torque tolerant
- Compact
- No moving parts
- Proven to work at any depth
- Individually load-tested at factory
- Patented design

Notes:

- Use with the Burnwire Mount (REL-158)
- For use in seawater only

 globaloceandesign.com

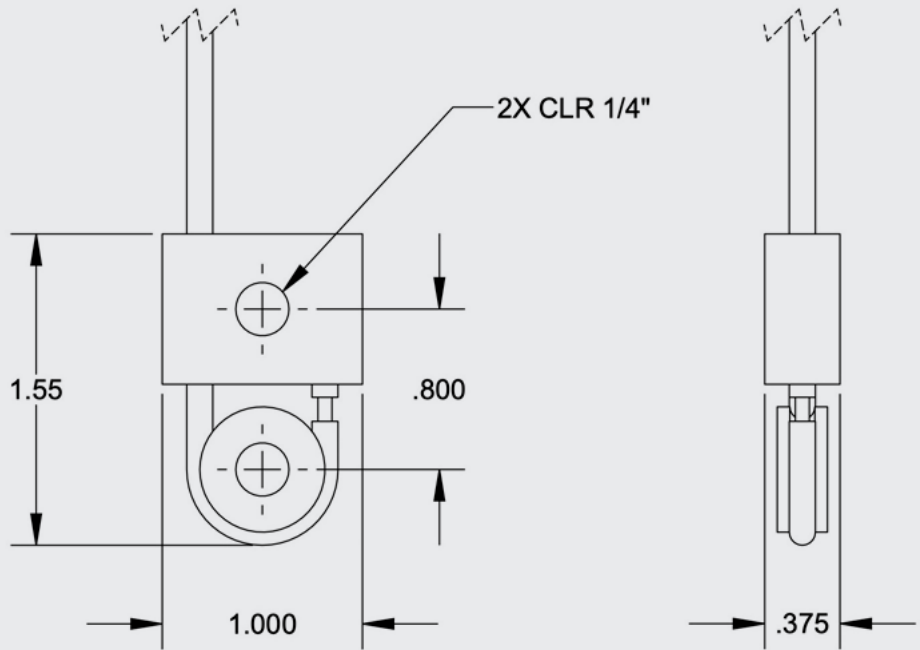
 info@globaloceandesign.com

 858.560.1799

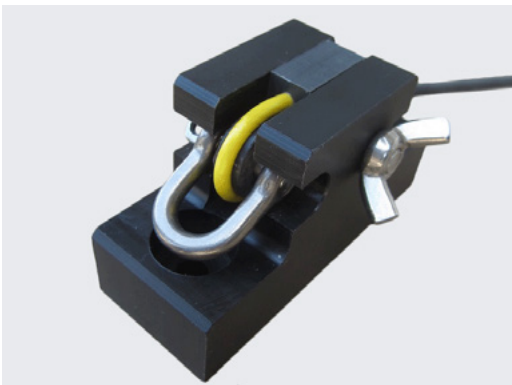
 7955 Silverton Ave., Suite 1208
San Diego, CA 92126

Burnwire

REL-238



Companion Product:



Burnwire Mount

REL-158

When attached to a frame, the Global Ocean Design Burnwire Mount (**REL-158**) controls side-loading and torsion of the burnwire.

Shown with the Burnwire (REL-238) installed.