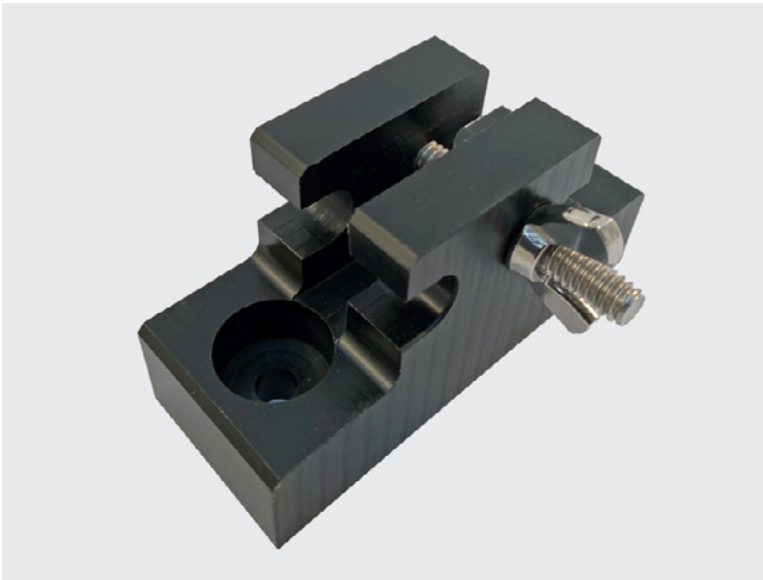




# Burnwire Mount

REL-158



A Burnwire Mount is a machined Delrin component designed to securely attach a burnwire to a frame.

When attached to a frame, the Global Ocean Design Burnwire Mount (REL-158) controls side-loading and torsion of the burnwire.

## Key Features:

- Rated for 250-lbs (static)
- Controls side-loading and torsion of the burnwire
- Electrically isolates burnwire from a frame
- Easy to load and reload the burnwire

## Notes:

- Recommended for use with the Burnwire (REL-238)

---

[globaloceandesign.com](https://www.globaloceandesign.com)

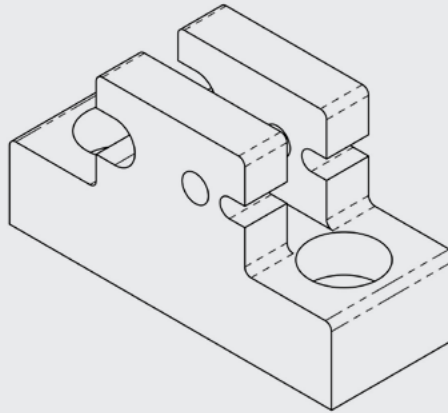
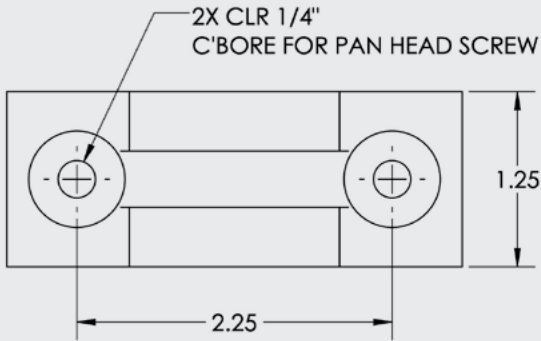
[info@globaloceandesign.com](mailto:info@globaloceandesign.com)

858.560.1799

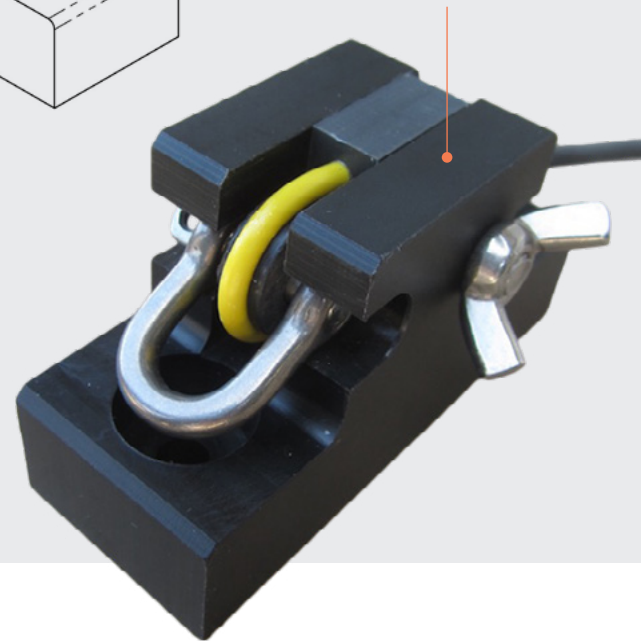
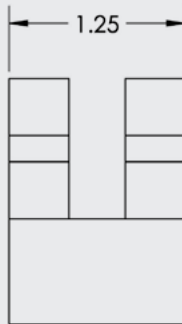
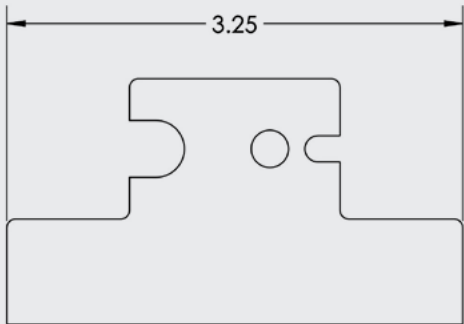
7955 Silverton Ave., Suite 1208  
San Diego, CA 92126

# Burnwire Mount

REL-158



Burnwire Mount with Burnwire installed.



## Companion Product:



## Burnwire

REL-238

The Global Ocean Design Burnwire (REL-238) holds up to 250-lbs (static) until a 10-24V DC voltage is applied. Using seawater as a conductor, the burnwire galvanically corrodes, releasing in 6-15 minutes depending largely on environmental conditions, mainly temperature.

